

LGE

Signal Tower



LED



85dB at 1m

(FB type)

Electronic Sound 1

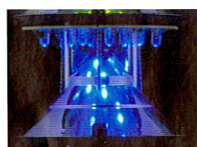
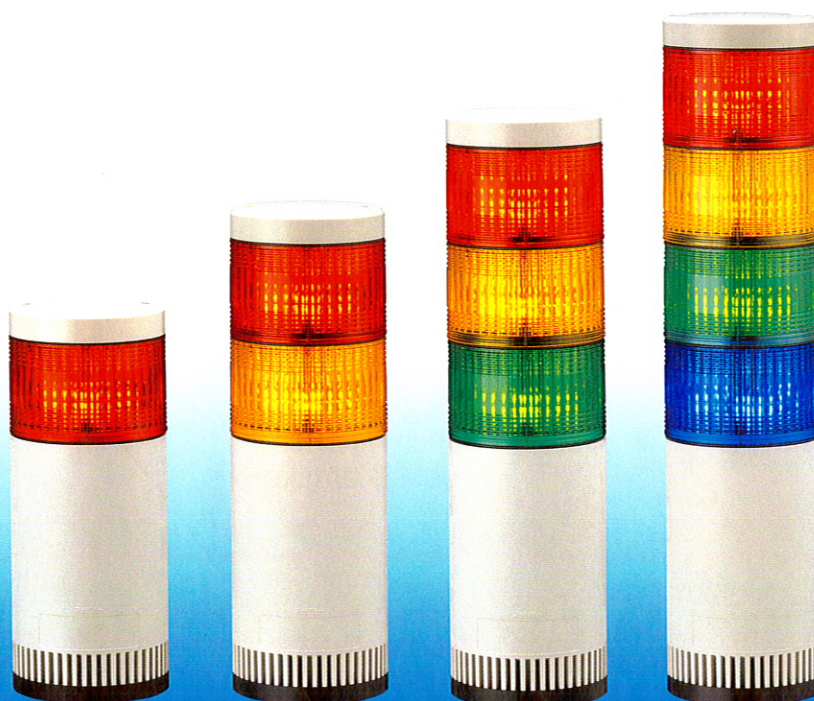
(FB type)

Ø100

IP54

NPN/PNP

Open collector



Triple Reflection system

Large Signal Tower featuring enhanced visibility and downward illumination, designed for large machines.

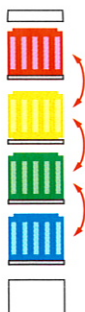
- PATLITE's large prism cut lens: For enhanced downward illumination (cut lens: $\Phi 100\text{mm} \times 60\text{mm}$ high).
- Newly developed triple-reflection system: For enhanced visibility and low power consumption.
- Lighting Pattern: Flashing and continuous.
- FB type: Built-in buzzer with volume up to 85dB at 1m.
- Installation: Direct mount.
- Interchangeable Modules: No re-wiring even after installation.
- Lens: Superior impact and heat resistant polycarbonate resin for superior durability and light transmission.
- NPN/PNP compatible: 24V DC type; 100/220V AC compatible with NPN only.
- CE Compliance: 24V AC/DC type ONLY.
- Available Colors: Red, Amber, Green, Blue and Clear/White.

Interchangeable LED modules

- Changeable color sequence: Easy to add / remove up to 4 colored modules even after installation.
- Note: LED modules of the same color within a signal tower will light up simultaneously.

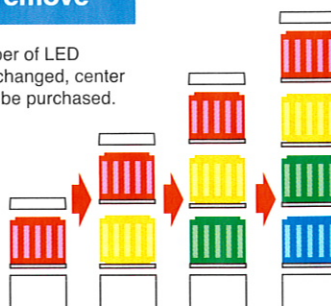
The wiring remains the same

Each color of LED module corresponds to the lead wire color.

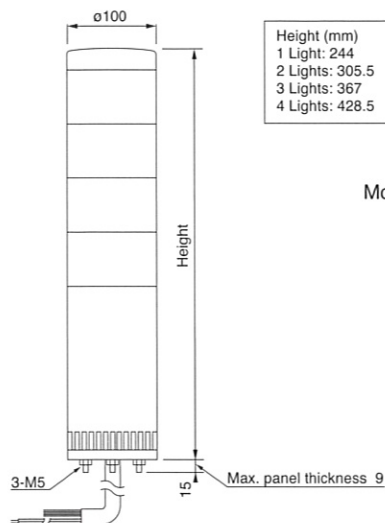


Easy to add and remove

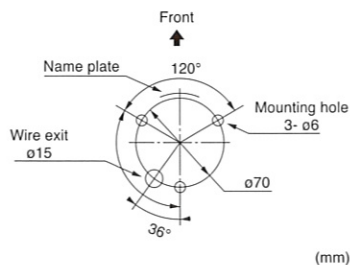
If the number of LED module is changed, center shaft must be purchased.



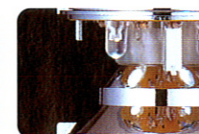
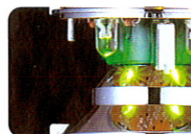
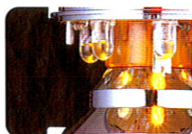
Dimensions



Mounting Dimension



"Super Bright" LED provides highest level of visibility.



Wiring Diagram

Note: See page 170 for wiring diagram

LGE Type

Number of stacks	Model	Rated Voltage	LGE Power Consumption
1 Light	LGE-102 / 102FB	24V AC/DC	2.5W
	LGE-110 / 110FB	100V AC	5.7W
	LGE-120 / 120FB	220V AC	5.7W
2 Lights	LGE-202 / 202FB	24V AC/DC	4.5W
	LGE-210 / 210FB	100V AC	8.2W
	LGE-220 / 220FB	220V AC	8.2W
3 Lights	LGE-302 / 302FB	24V AC/DC	6.5W
	LGE-310 / 310FB	100V AC	10.7W
	LGE-320 / 320FB	220V AC	10.7W
4 Lights	LGE-402 / 402FB	24V AC/DC	8.5W
	LGE-410 / 410FB	100V AC	13.2W
	LGE-420 / 420FB	220V AC	13.2W

FB type: approx. 60 flashes per minute.

How to Order (1)

LGE-402FB-RYGB	
Stack 1~4	Color R: Red Y: Amber G: Green B: Blue C: Clear/White Top to bottom
Rated Voltage 02: 24V AC/DC 10: 100V AC 20: 220V AC	Type Blank: Continuous light FB: Continuous or flashing light with audible alarm

How to Order (2)

Light-Module

Light Unit	Color	Rated Voltage	Wattage
LGEM24-R	Red	24V AC/DC	2W
LGEM24-Y	Yellow		
LGEM24-G	Green		
LGEM24-B	Blue		
LGEM24-C	Clear		

Power Unit

Power Unit	Rated Voltage	Type Operation
LGEB-120	120V AC	Continuous
LGEB-24	24V AC/DC	
LGEB-120FB	120V AC	Continuous/Flashing with Audible Alarm option
LGEB-24FB	24V AC/DC	

Shaft Assembly

Part No.	Light- Modules per Base Unit
LGSHAFT-1	1
LGSHAFT-2	2
LGSHAFT-3	3
LGSHAFT-4	4

How to order (Example)

Three LED lights (Red, Yellow, Green) with flashing at input voltage of 120V AC

1.Power Unit: LGEB-120FB × 1pce

2.Light Module:LGEM-24-R × 1pce

LGEM-24-Y × 1pce

LGEM-24-G × 1pce

Note:LGEB contains a transformer that steps down the input voltage to 24V DC.